

HERITAGE PLACES OF INTEREST

1 Pilton

One of Rutland's smallest villages, Pilton's mainly stone farmhouses, cottages, and barns are grouped around the small parish church of St. Nicholas.



The church was probably built in the 13th century and used as a school in the 16th century. A report into its condition in 1584 states that its glass windows had suffered as a result. The church was restored during Victorian times and until 1900, had its own curate who lived in the rectory (now known as Willoughby Cottage).

Most of the houses are limestone, but some are built of rose-coloured brick manufactured locally. During the 19th century, brickworks along the Pilton Road between the village and North Luffenham made bricks for the building of local railway bridges.

Rutland Quarry Pits

Throughout the late 19th and early 20th centuries, Luffenham quarries were exploited for the rich deposits of ironstone – the prize of a geology that gives Rutland soil its rich red colour. Quarries were opened and narrow-gauge tramways built to link them to the great railway lines that criss-crossed the county. Alongside them, people also harnessed the power of wind and water.

One by one the quarries were closed and their tramways fell into disuse. Today, the scars of the quarries on the landscape have largely healed, but some evidence for the busy industry of these Rutland villages still remains for those who wish to find it.

2 Welland Viaduct

Known as the Welland, Seaton or Harringworth viaduct, depending on which side of the Rutland-Northamptonshire border you live, this 4-mile-long viaduct carried the London, Midland and Scottish railway line across the low-lying Welland valley. Built between 1875 and 1878, over 2000 men worked on the viaduct, using an estimated 20 million bricks to create its 82 arches.



3 St. Mary's Church, South Luffenham

Dating to just after the Norman Conquest, the parish church of St. Mary contains a memorial to Rose Boswell, the daughter of a "king of the gypsies".



She died in 1793 whilst her family were encamped just outside the village near Fosters Bridge. At first, the local churchwardens refused to bury her in the church, but they were overruled by the curate.

The church still houses a marble slab dedicated to Rose and a 14th century tomb with an effigy of a member of the Culpepper family.

4 The Wind, Water and Electric Mills of South Luffenham

Close to the level crossing and railway junction are the remains of three mills. The windmill, now only a shell, was built in 1832. It continued to operate until 1908 even though a storm in 1895 had blown its top off.

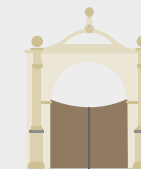


The watermill on the opposite side of the road also dates from the early 19th century. Originally, it ground flour, but after 1910, when a steam-driven mill was installed, it concentrated on milling heavier grain such as split beans and maize. It was finally closed in 1948 when the "flume" or water channel broke, altering the river's course.

The steam and electric mill was opened in 1892, with water for the steam boilers pumped from the water mill. At its peak, the mill could grind 20 sacks of grain an hour. It was closed in 1927, but the buildings were converted and are still in use today.

5 Luffenham Hall

Luffenham Hall, dating from the 16th century and known (until the demolition of Old Luffenham Hall) as the Digby Manor House, is on the left. Little can be seen of the building behind the high stone walls, but a stone octagonal tower or gazebo overlooks the road, and a peep through the decorative ironwork gates will provide a glimpse of the old stone and timber-framed barn built in 1955.



The school and adjacent fields are on the site of the original Luffenham Hall, built around 1635. The hall was demolished at the start of the 1800s, but the remains of its ornamental gardens are still visible. To your right is a ha-ha - a sunken stone boundary wall designed to separate the formal gardens close to the house from the wider countryside without intruding on the view. The Hall was besieged by Parliamentary forces in 1642.

RUTLAND HERITAGE TRAIL No. 4

Pilton | North Luffenham | South Luffenham

LENGTH



Approximately 4 miles. Allow 1 to 2 hours.



11½ miles

START AND FINISH



Church Street, North Luffenham, LE15 8JR

TERRAIN



Mixture of field footpaths and metalled road. There are some uphill stretches and walking along busier roads.



Mostly quiet metalled roads, with two crossings of a busy main road (A47).

REFRESHMENTS



North Luffenham - The Fox
 South Luffenham - The Coach House Inn & The Boot Inn
 Seaton - The George and Dragon
 Barrowden - Exeter Arms



Mills, Quarries & Railways

 RUTLAND HERITAGE
TRAIL SERIES
View the Heritage
Trail Map Series

Discover Rutland is the official Destination Management Organisation for the county, aiming to promote and support tourism in the area to echo our county motto, "Multum in Parvo" (Much in Little).

Make sure to visit the Discover Rutland website and pick up our seasonal visitor guide for more inspiration.

Share your Rutland experiences with us at:



discoverrutland



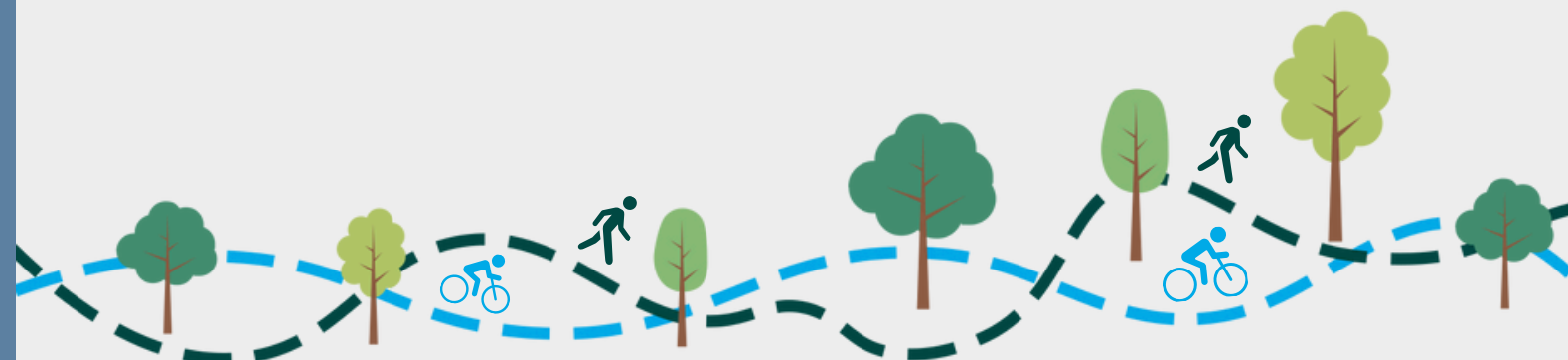
DiscoverRutland



www.discover-rutland.co.uk

The UK government funded this project through the UK Shared Prosperity Fund. Designed by Nimble Media, illustrations and artwork by DesignCounsell and published by Discover Rutland ©2025

Front cover image - Welland Viaduct


South-east of Rutland Water, the Luffenham villages and Pilton bear witness to Britain's industrial past - a tale of mills, quarries, and railways.

Throughout the late 19th and early 20th centuries, the southeastern half of Rutland was exploited for its rich deposits of ironstone - the prize of geology that gives Rutland soil its rich red colour. Quarries were opened, and narrow-gauge tramways were built to link them to the great railway lines that crisscrossed the county. Alongside them, people also harnessed the power of wind and water.

One by one, the quarries closed, and their tramways fell into disuse. Today, the scars of the quarries on the landscape have largely healed, but some evidence of the busy industry of these Rutland villages remains for those who wish to find it.

Please park considerably, and remember to respect our beautiful countryside. Follow the Highway & Country codes, and take care when crossing busy roads.

BIKE HIRE

A range of bikes, e-bikes, child seats and even dog buggy attachments can be hired from Specialized at Rutland Cycling, Whitwell, LE15 8BL

There are several venues around the county that participate in our e-bike scheme, more information can be found online at

www.discover-rutland.co.uk/e-bikes



The Walk

Start at North Luffenham's parish churchyard and cross the stone stile in the right-hand wall overlooking the Chater Valley. Walk diagonally across the field toward the trees. Cross the River Chater by the footbridge and head diagonally uphill, towards the railway line.

Turn left, cross the railway bridge, and reach a crossroads. Take the right-hand turn and walk towards Pilton. ① As the road bends sharply right, look for a bridleway on the left. For a detour, Pilton village is 600 yards ahead. Follow the bridleway, keeping the woodland on your right, then passing through a row of hedging with a spinney on your left.

The bridleway climbs slightly uphill, offering views of North Luffenham and its church spire to the left. Continue along this wide green lane to North Luffenham Road.

Cross the road and follow the bridleway ahead. Walk along the unploughed strip on the left side of the field. At the field's end, continue along a newly planted row of hedging with fields either side.

The bridleway emerges in South Luffenham. Turn right, following the road into the village center. Cross the railway bridge and take Angle Lane to the Square. A tarmac path leads across a field and over a stream to the village's east side, emerging opposite St. Mary's Church. ③ Turn left, pass the Boot Inn, and continue to a fork in the road.

Take the left-hand fork past the Old School House. Shortly after, take a tarmac path left, passing a large pond to Pinfold Lane. Opposite, a wooden gate leads to a field footpath.

Cross the field, heading slightly left, and go through a gate. Follow a narrow hedged track along the disused railway line, which widens near the modern railway. Turn left onto Station Road, passing a disused windmill on the right.

Cross the level crossing and pass the old train station and Old Mill Farm, a 19th century watermill. ④ Cross the bridge, follow the road past brick cottages and the sewage works, and continue for ½ mile to North Luffenham until reaching a rad junction where you turn onto Digby Drive, then returning to where you began. ⑤

The Cycle Ride

Start in North Luffenham near the parish church and head left out of the village to the T-junction by The Fox pub. Turn left, pass the black post box, and take the left-hand road signposted for Morcott.

Cycle downhill, cross the River Chater, and then uphill past the railway bridge to a small crossroads. Turn right for Pilton. ① At Pilton's crossroads, the church is to your right if you wish to visit. Otherwise, turn left to Morcott, crossing a stream and cycling uphill into the village.

Pass through Morcott, crossing a disused railway line, and at the junction, turn right, then right again onto the A47. Take the immediate left-hand turn for Seaton. After ¾ mile, at a bend, you'll see a bridleway to Laxton ahead, the road to Barrowden left, and the road to Seaton right.

Turn right and cycle downhill, taking a right-hand turn. The impressive arches of the railway viaduct ② will come into view on your left. Cross the disused railway line and modern railway tunnel.

Before reaching Seaton, turn left and cycle downhill to a junction. Turn left, then shortly after, take another left toward Morcott. Pass under a viaduct arch and continue to the junction with the Barrowden back road. Cycle into Barrowden, cross the Morcott Road crossroads, and continue to the Luffenham Road junction. Turn left, cross the A47, and pass The Coach Inn. Cycle downhill into South Luffenham, taking Back Lane through the village. ③

Cross the dismantled railway bridge, follow the road to North Luffenham, and take the right-hand route under the modern railway line and over Moor Lane bridge. Arrive in North Luffenham near Kings Farm, turn left, and cycle past Luffenham Hall gates. ⑤ Turn left into Church Street and return to your starting point.

TRAIL NO. 4 - MILLS, QUARRIES & RAILWAYS

