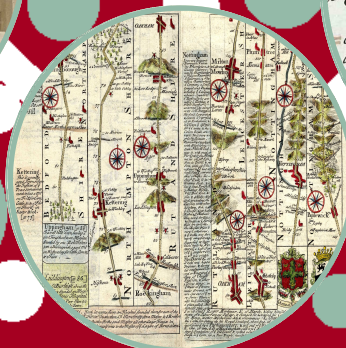
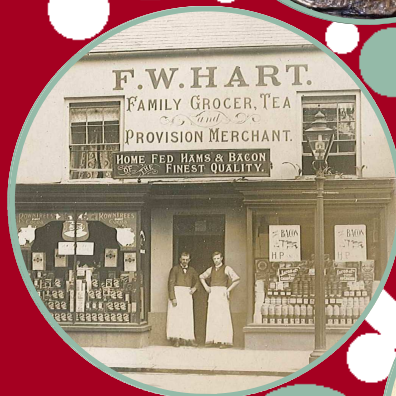


Issue 12

Rutland Local Studies & Family History Library



Rutland County Museum

Catmos Street

Oakham

Rutland

LE15 6HW

Tel: 01572 758440

Email: history@rutland.gov.uk



Rutland
Library
Service



Rutland
County Council

Introduction

Rutland County Museum houses numerous reference materials on Rutland and the surrounding area. Begin to discover your Rutland Roots with our resources including:

- General Family History instruction titles (small loan collections are also held in Rutland Libraries),
- Local census returns (microfilm),
- Parish registers: baptisms, marriages, banns, and burials (microfiche),
- Local Maps,
- Local newspapers (microfilm),
- Trade Directories,
- Local Author Collection,
- Local Music,
- Local History Library (loan copies of many titles are available in Rutland Libraries, see our catalogue for details),
- Photograph & postcard collections, and more.

Also available is [FREE access to Ancestry.co.uk Library Edition](#), and the [British Newspaper Archive](#), enabling you to research your family history.

The Local Studies room has a film reader and fiche reader/printer along with free Internet access for public use (Genealogy use only). If you have an enquiry please ask staff who will be happy to help.

Rutland Library Service and Rutland County Museum have a joint email address for family and local history enquiries: history@rutland.gov.uk

Want to learn more about Rutland? Try our Guided [Heritage Tours](#) of the Museum and Oakham Castle—available to book for groups of 6 or more. Open tours are advertised during the summer season in the local press and on our website. More details and a tour leaflet are available at:

www.rutland.gov.uk/museum

Our Collections

The collections of the Rutland Local and Family History Library are an amalgamation

of the following collections:

- Rutland Library Service Local Studies and Family History Reference and Reserve Collections
- Rutland County Museum Local History Collection
- The library of the Rutland Local History and Record Society
- Oakham School Local Studies Collection

All of these materials, except for the Oakham School Collection, are available to search on our library catalogue: <http://capitadiscovery.co.uk/rutland>

All materials held in the library at Rutland County Museum are Reference Only, and some items are held in secure store. However, we are not a county archive for Rutland, and do not hold original records for e.g. school admissions, church records, parish councils etc. These are available at the Record Office for Leicestershire, Leicester & Rutland at Wigston Magna (Tel: 0116 2571080)

Newspapers

The collection below is available on Film. Please note **there are some gaps**; therefore please contact the museum if you wish to view a particular edition. Where newspaper copies are listed as available in 'Hard Copy', these are available at Oakham Library only, and require 24 hour notice to view (must be retrieved from storage).

Rutland Mercury Also Known as 'The Lincoln, Rutland and Stamford Mercury'	1710-1726 FILM 1728-1902 FILM 1904-1934 FILM 1939-1945 FILM 1960-1975 FILM 1975 – 1995 Hard copy 1996-date FILM* (*last 18 months – 2yrs in Hard copy)
Rutland Echo	1877–1886 FILM
Rutland Journal	20 Jul 1973- 20 Oct 1989 Hard copy
Rutland Times (<i>not complete</i>)	April 1977-date Hard copy
Uppingham Gazette	Nov 1869 – Jul 1870 FILM

Directories (Hard copy with some on fiche) All are located in the locked cabinet at Rutland County Museum.

- **Barker & Co**, Leicestershire & Rutland, 1875
- Barlow's Almanack, 1880, 1894, 1895, 1898, 1901, 1902
- George Alexander **Cooke** – Topographical and statistical description of the County of Rutland **1801**
- **Deacon's Court Guide and County Blue Book**: Leicestershire, Rutland and Northamptonshire, 1890 & 1891.
- **Dolby's** Stamford and Rutland Almanack, 1867, 1900, & 1903
- **J.G. Harrod & Co's** Postal & Commercial Directory of Leicestershire & Rutland, 1870
- **Kelly's** Directory of Lincolnshire, 1937.
- **Kelly's** Directory of Leicestershire and Rutland, 1876, **1881**, 1888, 1891, 1895, 1900, 1904, 1908, 1912, **1912**, 1916, 1922, 1925, 1928, 1936, 1941, & 1969.
- **Kelly's** Nottinghamshire, Leicestershire & Rutland, and Derbyshire, 1881, 1912
- **Matkin's** Oakham Almanack, 1892-1941
- **Mercer & Croker's** Leicestershire & Rutland 1877, Rutland 1870
- **Pigot's** Directory of Leicestershire & Rutland, 1828/9, 1831, 1835, 1840, 1841
- **Post Office** Directory of Leicestershire and Rutland (Kelly) **1855**
- **Slater's** Royal National Commercial Directory and Topography of Lincolnshire, Rutlandshire and Yorkshire 1857.
- C N **White's** Directory of Leicestershire & Rutland **1893-4** (12th ed.), & **1899** (15th ed.)
- **White's** History, Gazetteer, and Directory of the Counties of Leicestershire and Rutland, 1846, **1846**, 1862, **1863**, **1868**, **1877** & 1877. Also, Lincolnshire 1857 & 1842.
- **Wright's** Directory of Leicestershire and Rutland 1880, 1894, 1895/6, 1898, 1900

Maps and Plans

There are a selection of several hundred local maps (Rutland and surrounding counties) surveyed in 1884 onwards, with various editions and scales available. Please feel free to request a map from a member of staff. Also available: Rutland Tithes Database on CD-Rom.

Periodicals

A number of local history periodicals are available including the Rutland Record (current and historical), East Midlands historian (incomplete to 2004), The Rutland Magazine & County Historical Record, Vols. I-V (1903-12), Uppingham Magazine 1975-8, among others. Most are not current.

Genealogy and Family History

Poor Law

Record of the Guardians of Oakham Union Workhouse 1864-1868 (PDF files)	CDROM
Leicestershire and Rutland Poor Law Index 1598-1940s Quarter sessions 1714-1844, Removals and Settlements 1678-1832, Bastardy Order Books 1678-1832 and Bastardy Books 1844-1874	CDROM
Stamford Union Workhouse Parts 1-6 1835-1856 Book (Incl. parts of Rutland. Extracts from Poor Law Union Workhouse Minutes: transcripts of all entries that mention Paupers by name incl. full surname index)	Hard Copy-362.5

Census

Oakham, Rutland, and Uppingham	1841 FILM 1851 FILM 1861 FILM 1871 FILM
Oakham and Rutland	1881 FICHE
Oakham, Rutland, and Uppingham	1891 FICHE
Oakham, Rutland, Uppingham, and Stamford	1901 FICHE

All are also available via Ancestry, including 1911 census for Rutland.

Wills

A calendar of wills relating to the counties of Northants and Rutland 1510-1652 (set of 3 fiches)	FICHE
Index to wills and administrations proved and granted in the Archdeaconry Court of Leicester 1660-1750 (set of 5 fiches)	FICHE

Family and Local History for Children



A number of Local Studies resources have been chosen for children and are available for loan from Rutland Libraries. Oakham Library also has a selection of Classroom Support Resources to support Local History in the curriculum, these are available for loan to teachers.

Parish Registers held at Rutland County Museum

C=Bapt, M=Marriage, B=Bur, b=Banns

Allextton	C M B	1636-1812 1636-1829 & 1846-1951 1636-1812 & 1814-1992	Folder 1
Ashwell	C M B	1595-1951 1595-1849 & 1838-1941 1595-1812	Folder 1
Ayston	C M B	1656-1997 1656-1811, 1814-1853 & 1838-1998 1656-1995	Folder 1
Barrow – see Cottesmore			Folder 3
Barrowden	C M B	1603-1949 1603-1966 & 1968-1988 1614-1892	Folder 1
Belton-in-Rutland	C M B b	1577-1885 1577-1699, 1731-1738 & 1740-1836 1577-1735 & 1740-1813 1754-1795	Folder 2
Bisbrooke	C M B	1665-1981 1665-1804 & 1807-1836 1665-1996	Folder 2
Braunston	C M B	1558-1633 & 1655-1871 1558-1633 & 1655-1845 1558-1633 & 1655-1907	Folder 2
Brooke	C M B	1576-1630, 1632-1783 & 1786-1996 1582-1630, 1632-1744, 1754-1812 & 1817-1836 1574-1630, 1632-1779 & 1786-1996	Folder 2
Burley	C M B	1577-1983 1577-1981 1577-1996	Folder 2
Caldecott	C M B	1605-1908 1605-1751 & 1755-1984 1605-1770 & 1783-1988	Folder 3
Clipsham	C M B	1717-1985 1727-1811 & 1816-1984 1730-1987	Folder 3
Cottesmore with Barrow	C M B b	1655-1849 1655-1752 & 1755-1963 1655-1877 1755-1813	Folder 3

Edith Weston	C M B	1585-1882 1585-1812, 1814-1837 & 1839-1890 1585-1992	Folder 3
Egleton	C M B b	1538-1996 1538-1809 & 1813-1836 1538-1996 1754/5-1809	Folder 3
Empingham	C M B b	1563-1932 1563-1990 1563-1948 1794-1812	Folder 4
Essendine	C M B b	1600-1605 & 1612-1812 1624-1811 & 1813-1835 1621-1778 & 1780-81 1754-1811	Folder 4
Exton with Horn	C M B	1597-1700 & 1708-1915 1597-1700, 1708-1752 & 1754-1964 1597-1700 & 1708-1942	Folder 4
Glaston	C M B	1556-1811 & 1813-1954 1556-1835 1556-1812	Folder 4
Great Casterton	C M B	1655-1891 1655-1896 & 1898-1982 1655-1941	Folder 5
Great Easton	C M B	1660-1867 1656-1720 & 1722-1837 1656-1712, 1722-1752 & 1779-1891	Folder 5
Greetham	C M B	1576-1709 & 1729-1945 1576-1709, 1729-1754 & 1784-1975 1576-1709 & 1729-1978	Folder 5
Hambleton	C M B	1558-1926 1558-1846 1558-1978	Folder 5
Ketton	C M B	1568-1645 & 1653-1916 1561-1640 & 1653-1917 1569-1644 & 1653-1856	Folder 6
Langham	C M B	1559-1974 1559-1978 1559-1935	Folder 6
Little Casterton	C M B	1559-1812 1559-1753 & 1756-1847 1559-1812	Folder 6
Lyddington	C M B	1569-1948 1626-1750 & 1754-1989 1563-1683, 1757-1791 & 1813-1996	Folder 7

Lyndon	C M	1580-1996 1580-1748, 1757-1811, 1813-1837 & 1839-1996	Folder 7	Stoke Dry	C M	1559-1812 1559-1811 & 1815-1837	Folder 11
	B	1580-1812 & 1814-1996			B	1559-1812	
Manton	C M	1573-1913 1573-1749 & 1755-1836	Folder 7	Stretton	C M	1613-1995 1631-1753 & 1757-1837	Folder 11
	B	1573-1989			B	1631-1757 & 1759-1996	
Market Overton	C M	1573-1974 1573-1753 & 1755-1986	Folder 7	Teigh	C M	1572-1767 & 1777-1985 1572-1767, 1777-1812 & 1814-1981	Folder 12
	B b	1573-1986 1823-1982			B b	1572-1767, 1777-1812 & 1814-1984 1824-1981	
Morcott	C M B	1539-1960 1539-1837 1539-1904	Folder 8	Thistleton	C M B	1574-1706 & 1717-1995 1574-1706, 1717-1751 & 1754-1838 1574-1706 & 1717-1995 <i>Also 1 fiche – copy of register entries 1709-1717</i>	Folder 12
Normanton	C M B	1755-1801 & 1813-1966 1757-1836 & 1838-1954 1755-1801 & 1813-1966	Folder 8				
North Luffenham	C M B	1572-1869 1572-1837 1572-1923 C, M, B 1572-1812 also on CD-Rom	Folder 8	Tickencote	C M B	1574-1812 1574-1750, 1755-1812, & 1815-1972 1574-1812	Folder 12
Oakham (transcripts only to 1812)	C M B	1564-1952 1564-1978 1564-1894	Folder 9	Tinwell	C M B	1561-1644 & 1652-1939 1561-1644 & 1652-1837 1561-1644 & 1652-1812	Folder 12
Pickworth	C M B	1660-1812 1661-1753 & 1814-1957 1661-1785 & 1790-1812	Folder 10	Tixover	C M B	1754-1986 1754-1970 1754-1986	Folder 12
Pilton	C M B b	1585-1995 1553-1811 & 1813-1837 1548-1811 & 1814-1993 1764-1806	Folder 10	Uppingham	C M B	1571-1680, 1684-1927 1571-1744 & 1748-1968 1571-1984 Incl. 1678-1744 ('burials in woollen')	Folder 13
Preston	C M B	1560-1640 & 1735-1929 1560-1640 & 1735-1836 1560-1640 & 1735-1991	Folder 10	Wardley	C M B b	1574-1812 1574-1811 & 1814-1825 1574-1812 1754-1811	Folder 13
	Ridlington	C M B		1559-1965 1559-1837 1559-1995	Folder 10		
Ryhall	C M B b	1653-1878 1674-1946 1663-1697 & 1727-1867 1785-1812	Folder 10	Whissendine	C M B b	1577-1936 1577-1962 1577-1867 1787-1811	Folder 14
Seaton	C M B	1561-1678 & 1680-1974 1538-1678, 1680-1836 & 1838-1981 1538-1947	Folder 11	Whitwell	C M B	1716-1784 & 1786-1995 1716-1811 & 1813-1837 1786-1990	Folder 14
	South Luffenham	C M B		1682-1983 1682-1734, 1754-1910, 1912-1958 & 1960-1994 1678-1811 & 1813-1871	Folder 11	Wing	C M B
				Withcote	C M B	1679-1774, 1776-1809 & 1813-1975 1755-1977 1813-1973	Folder 14

Indexes & CD-Roms

Aircraft crashes in the East Midlands	CDROM
International Genealogical Index (IGI, 1992 Edition) for Leicestershire, and Rutland	FICHE
Leicestershire and Rutland Strays Index	CDROM
Leicestershire & Rutland County Burial index	CDROM
Leicestershire & Rutland Military Indexes	CDROM
National Burial Index for England and Wales 2 nd edition	CDROM
Phillimore's Leicestershire Marriages	CDROM
Rutland Marriage Index Parts 1-6 1754-1837	Hard copy
Rutland Pub Index	CDROM
Index to the names of females appearing in the abstracts of Leicestershire Marriage Bonds and Allegations for Marriage Licences 1570 to 1729	929.3 Hard copy
Rutland Census Index 1851, 1861, 1871, 1891	CDROM
Rutland Parish Registers 1538-1812, over 20 parishes Vol 1&2	CDROM
The Leicester Project (68 Parish Registers)	CDROM
Stamford Census Surname Index 1841, 1851, 1861, 1871, 1891, 1901 <i>1841 & 1851 Includes Bourne</i>	FICHE
Leicester, Leicestershire & Rutland Indexes to Non-conformist baptisms 1706-1921 & burials 1663-1978	CDROM

Useful addresses

Oakham Library (for hard copy newspapers & reserve stock)
Catmos Street, Oakham, Rutland, LE15 6HW
Tel: 01572 722918

The Rutland Local History & Record Society is located at the museum, address details on front cover. Web: www.rutlandhistory.org

The Leicestershire & Rutland Family History Society

LRFHS Research Centre & Library, Unit 4B, Pilot House, King Street, Leicester, LE1 6RN

Enquiries Tel: 0116 285 7211

Web: www.lrfhs.org.uk for local contact details

Follow us on Facebook/[rutlandcountymuseum](https://www.facebook.com/rutlandcountymuseum) and Twitter @[@rutlandmuseum](https://twitter.com/rutlandmuseum)